



LEAPTON  
SOLAR

1 Tier-1  
BNEF

LEAP FROM JAPAN TO THE WORLD

日本からの太陽光発電スマート製造



PART1

WHO IS LEAPTON ?



# ABOUT LEAPTON



BloombergNEF Tier-1 Listed



Customers From 40 Countries



2GW Capacity



500+ Employees Worldwide



Full Automated Line



JPN Land Holder

LEAPTON ENERGY – the world’s leader of PV module and system supplier from Japan. BloombergNEF Tier 1 listing. Since last 10 years of experience, Leapton Energy has built a deep subject matter expertise in solar system installations and solar module manufacturing.

Leapton Energy high quality solar modules for 25 years power output. Our experienced photovoltaic technology and sales team can provide the most suitable modules for each solar system.



# FROM JAPAN TO THE WORLD

Leapton Energy is a Japanese company and is also a project developer in Japan. It holds around 80 pieces of land reserve for power plant development. Leapton's own brand of PV module is sold to 40 countries and regions.

- More than 300 distributors
- 22 japan banks financing support
- Member of JPEA
- Member of JPEC



EUROPE

- 🏠 Europe warehouse
- 📍 Rotterdam, Netherlands



WORLD

- 🏭 Chinese Factory
- 📍 Changshu, China



JAPAN

- 🏢 Japanese Company
- 📍 Kobe, Japan
- 📍 Tokyo, Japan

# MILESTONE

2012

- **Leapton Energy Co., Ltd.** was established in Kobe, Japan.  
Main Business: Japan and overseas PV system and sales.

2013

- **Leapton Engineering Technology (Shanghai) Co., Ltd.** was established in Shanghai, China.  
Main Business: Chinese PV System development and sales.

2014

- **Leapton Energy Co., Ltd. - Tokyo Branch** was established in Tokyo, Japan.  
Main Business: Japanese PV power stations development, management and after-sales maintenance.

2017

- **Leapton Solar (Changshu) Co., Ltd.** was established in Changshu, China.  
Main Business: PV solar modules production and overseas sales.

- Launch of PV module manufacturing and production capacity reach 300MW.

2018

- Leapton has more than 300+ employees worldwide.
- Production capacity reach 600MW.

2020

- New factory (phase 2, land 40000m<sup>2</sup>) , signing ceremony, located in Yushan High-tech Industrial Park, Changshu, Jangsu, China
- BloombergNEF Tier 1 Listed PV manufacturer
- Leapton new factory (first phase 1.5GW capacity) construction completed and starts production.

2021

- **Suzhou Yuli Energy Technology Co., Ltd.** was established in Changshu, China.  
Main Business: Chinese PV power stations development, management and after-sales maintenance.

2022

- Leapton Energy keep Tier 1 listing for **more than 2 years.**
- Construction of the second phase **3GW plant started.**
- Leapton Energy has celebrated its **10th anniversary.**



2021



2020



2022

2012



2013



2014



2020

Company	Capacity (GW)	Production (GW)	Revenue (USD)	Profit (USD)
First Solar	1.5	1.5	1.5	1.5
Canadian Solar	1.5	1.5	1.5	1.5
Trina Solar	1.5	1.5	1.5	1.5
JA Solar	1.5	1.5	1.5	1.5
Longi Solar	1.5	1.5	1.5	1.5
Shengyang Solar	1.5	1.5	1.5	1.5
REC Solar	1.5	1.5	1.5	1.5
JA Solar	1.5	1.5	1.5	1.5
Shengyang Solar	1.5	1.5	1.5	1.5
REC Solar	1.5	1.5	1.5	1.5

# LEAPTON TECHNOLOGY ROAD MAP

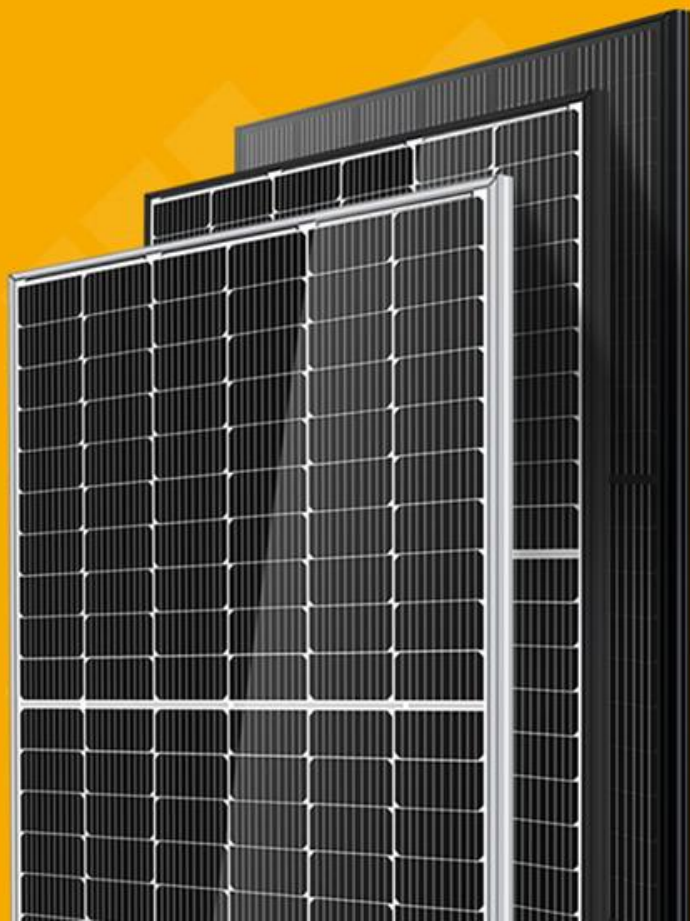


日本からの太陽光発電スマート製造 LEAP FROM JAPAN TO THE WORLD

LEAPTON ENERGY – the world's leader of PV module and system supplier from Japan. Since last 8 years of experience, Lepton Energy has built a deep subject matter expertise in solar system installations and solar module manufacturing.



# Monocrystalline PRODUCTS



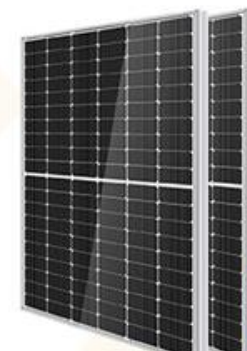
## 182mm Cell Size — MBB Half-Cell Series

- MBB Half-Cell, lower internal current, lower internal resistance loss.
- 182mm\*182mm cell size, medium size.
- More spectrum response, more output.
- Black modules very suitable for rooftop system.



• LP182\*182-M-54-MH 400-415W

1724mm\*1134mm\*30mm



• LP182\*182-M-60-MH 450-465W

1909mm\*1134mm\*30mm



• LP182\*182-M-66-MH 485-510W

2094mm\*1134mm\*30mm



• LP182\*182-M-72-MH 530-560W

2279mm\*1134mm\*30mm/35mm



• LP182\*182-M-78-MH 580-605W

2443mm\*1134mm\*35mm



Monocrystalline  
**PRODUCTS**



## 210mm Cell Size — MBB Half-Cell Series

- MBB Half-Cell, lower internal current, lower internal resistance loss.
- 210mm\*210mm cell size, higher output power.
- More spectrum response, more cost-effective.
- High power generation from a single module.
- Bifacial module, provide an additional 5~25% output.



- LP210\*210-M-60-MH 590-610W

2172mm\*1303mm\*35mm

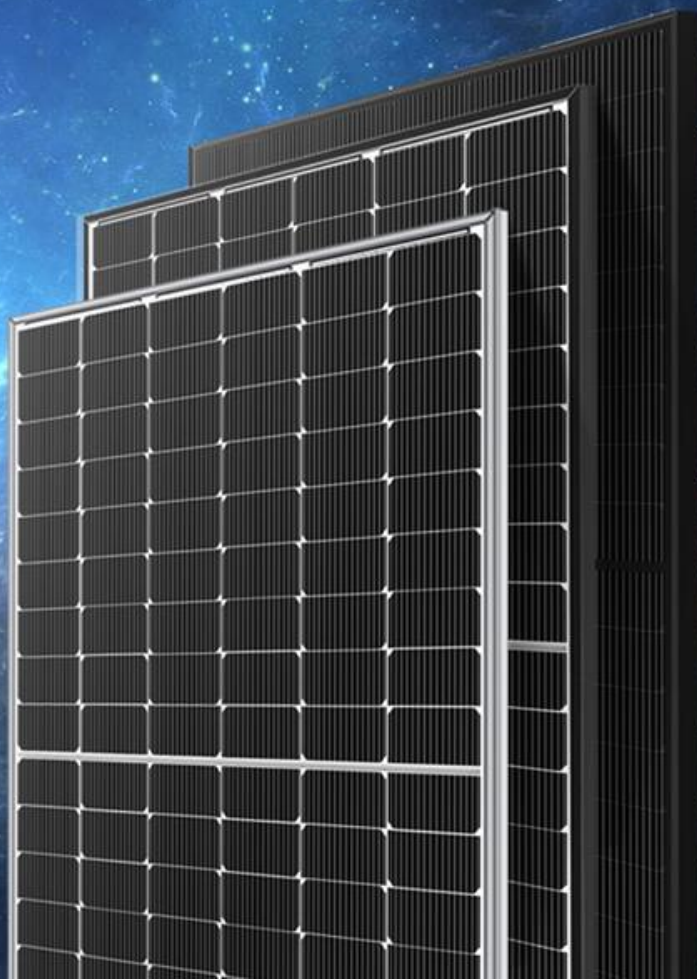
- LP210\*210-M-66-MH 650-670W

2384mm\*1303mm\*35mm





# Monocrystalline PRODUCTS



## N-Type Series- 182mm & 210mm

- New circuit design N-type cells, can increase the output power of 10W~20W.
- Less power attenuation, 30 years power is still 87.4%.
- Bifacial module power increases 5-25% generally.



• LP182\*182-M-54-MH 410-430W

1724mm\*1134mm\*30mm



• LP182\*182-M-60-MH 460-480W

1909mm\*1134mm\*30mm



• LP182\*182-M-72-MH 565-585W

2279mm\*1134mm\*30mm/35mm



• LP182\*182-M-78-MH 605-625W

2443mm\*1134mm\*35mm



• LP210\*210-M-66-MH 690-710W

2384mm\*1303mm\*35mm

# TECHNOLOGY

Bifacial with transparent backsheet make the modules more competitive



## UV

Extremely High UV resistance



increase 5W with light reflection



High transmission rate



Protect the inner layer of the backsheet

## PID

Extremely High PID resistance



Customize production



Fast delivery



Lower price



PART2

WHY IS LEAPTON ?




# JAPANESE BANK SUPPORT


Low cost of Japanese bank financing

## Banks in cooperation

 **みずほ銀行**


 **みなと銀行**

 **徳島大正銀行**

 **兵庫信用金庫**

 **中国銀行**


 **広島銀行**

 **三菱東京UFJ銀行**

 **商工中金**


 **伊予銀行**

 **播州信用金庫**


 **関西みらい銀行**

 **三井住友信託銀行**

 **りそな銀行**

 **日本政策金融公庫**

 **神戸信用金庫**

 **日新信用金庫**

 **百十四銀行**

 **三井住友銀行**


 **阿波銀行**

 **高知銀行**

 **池田泉州銀行**

 **紀陽銀行**

## Banks under negotiation

 **あおぞら銀行**





**PHASE 2**  
3GW 70000 m<sup>2</sup>

**PHASE 1**  
2GW 30000 m<sup>2</sup>



Phase II 3GW plant to be completed in August 2023









# PART3

# CASE STUDY

日本からの太陽光発電スマート製造

LEAP FROM JAPAN TO THE WORLD



# PROJECT REFERENCE



**38MW**

**Laos**

**2021**



**20.5MW**

**Kazakhstan**

**2019**



**30MW**

**India**

**2019**



**2.1MW**

**Japan**

**2020**



**2.1MW**

**Japan**

**2020**



**1.2MW**

**Japan**

**2021**



# ROOFTOP SOLAR PROJECTS



3.1MW

China

2022



1MW

Vietnam

2020



2MW

China

2022



750KW

Germany

2019



# THANK YOU

LEARN MORE ON [WWW.LEAPTONPV.COM](http://WWW.LEAPTONPV.COM)

---

LEAP FROM JAPAN TO THE WORLD