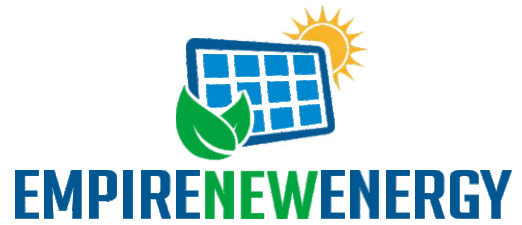


EMP-***P72D
POWER OUTPUT RANGE

315-340



POWER TOLERANCE



MAXIMUM EFFICIENCY



Increased module robustness to minimize micro-cracks



Pass class A fire test



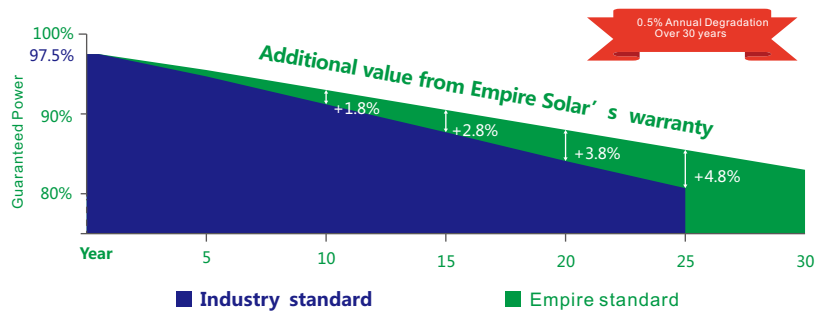
Higher maximum system voltage reduces BOS costs
30 year linear warranty
0.5% annual degradation
Low thermal coefficients for more energy production at higher temperatures

Comprehensive Products And System Certificates

IEC61215/IEC61730/UL1703/IEC61701/IEC62716
ISO 9001: Quality Management System
ISO 14001: Environmental Management System
ISO 18001: Occupation Health and Safety



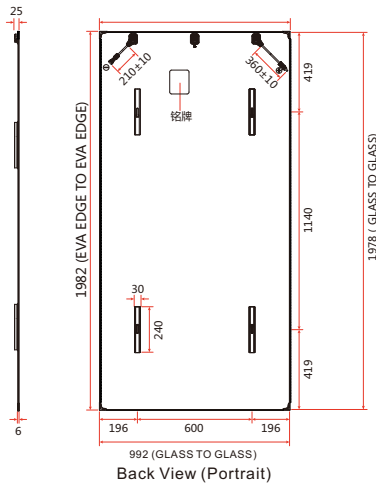
Empire Solar's Linear Performance Warranty



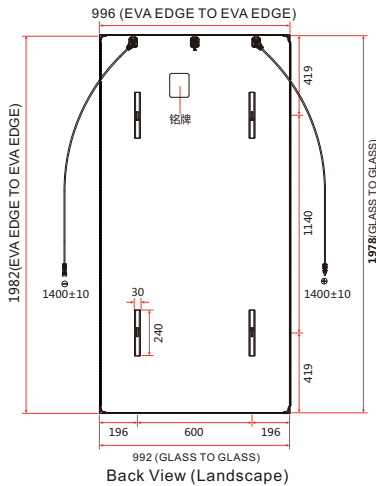


EMP- (315-340) P72D

DIMENSIONS OF PV MODULE(mm)
996 (EVA EDGE TO EVA EDGE)

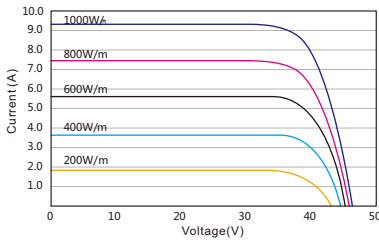


992 (GLASS TO GLASS)
Back View (Portrait)

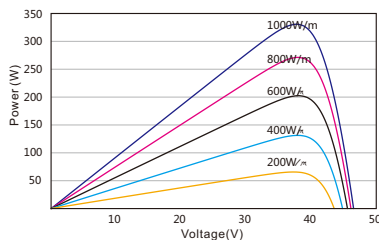


992 (GLASS TO GLASS)
Back View (Landscape)

I-V CURVES OF PV MODULE (340W)



P-V CURVES OF PV MODULE (340W)



ELECTRICAL DATA (STC)

Peak Power Watts-P _{MAX} (Wp)	315	320	325	330	335	340
Power Tolerance	±3%					
Binning Tolerance	0~+5					
Maximum Power Voltage-V _{MPP} (V)	36.80V	37.10V	37.40V	37.70V	38.00V	38.30V
Maximum Power Current-I _{MPP} (A)	8.56A	8.63A	8.70A	8.76A	8.82A	8.89A
Open Circuit Voltage-V _{OC} (V) (±2%)	45.20V	45.50V	45.70V	45.90V	46.20V	46.40V
Short Circuit Current-I _{SC} (A) (±2%)	9.11A	9.16A	9.24A	9.30A	9.35A	9.45A
Module Efficiency η _m (%)	16.0%	16.3%	16.5%	16.8%	17.0%	17.3%

STC: Irradiance 1000W/m², Cell Temperature 25°C, Air Mass AM1.5.

ELECTRICAL DATA (NOCT)

Solar Cells	Multicrystalline 156.75 × 156.75 mm (6 inches)
Cell Orientation	72cells (6 × 12)
	1978×992×6mm
Module Dimensions	1982 × 996 × 6 mm with edge banding
	1984 × 998 × 7.6 mm with corner protector
Weight	28kg
Front Glass	2.5 mm High Transmission, AR Coated Heat Strengthened Glass
Interlayer	EVA/POE
Back Glass	2.5 mm Heat Strengthened Glass
Frame	Frameless
J-Box	IP 67 or IP 68 rated
Cables	Photovoltaic Technology Cable 4.0 mm ²
	Portrait: 210/360 mm , Landscape: 1400/1400 mm
Connector	05-8

TEMPERATURE RATINGS

Temperature Coefficient of P _{MAX}	-0.37%/°C
Temperature Coefficient of V _{OC}	-0.29%/°C
Temperature Coefficient of I _{SC}	0.05%/°C

MAXIMUM RATINGS

Operational Temperature	-40 + 85°C
Maximum System Voltage	1000V
Max Series Fuse Rating	15A

(DO NOT connect Fuse in Combiner Box with two or more strings in parallel connection)

WARRANTY

10 year Product Workmanship Warranty
30 year Linear Power Warranty

PACKAGING CONFIGURATION

Modules per box: 33 pieces
Modules per 40' container: 660 pieces