

We Make Solar Evolve

# EliTe POLY

## Polycrystalline Module

ETP340-72

ETP345-72



Rich Product Portfolio & Innovative Product Strategy, satisfy customer needs to the best, and keep the customers' overall costs to the lowest.



### High Conversion Efficiency

Industry-leading processing techniques realize great module efficiency to a maximum of 17.8%, steady power output guaranteed.



### Anti-reflective Coating and Reduce O&M Costs

Easier to clean by rainwater to remove dirt on the glass surface, making higher power output and lower maintenance costs.



### 0 to +5W Positive Tolerance

Gain more power yields than expected.



### Excellent Loading Capability

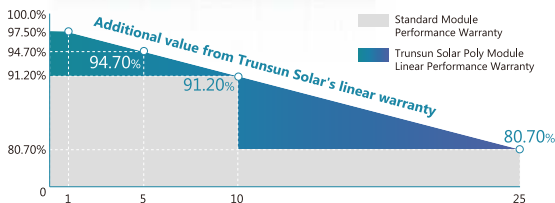
Test load: 2400Pa wind loads, 5400Pa snow loads. Durable and long-lasting.



### Top-quality & Trustworthy Product

Rigorous Quality Management System built. Multiple internationally recognized PV industry standard certifications attained.

### LINEAR PERFORMANCE WARRANTY



25 25-years Linear Performance Warranty

10 10-years Product Material & Workmanship



## ELECTRICAL SPECIFICATIONS (STC)

| Model Type                         | ETP340-72     | ETP345-72 |
|------------------------------------|---------------|-----------|
| Peak Power (Pmax)                  | 340W          | 345W      |
| Module Efficiency                  | 17.5%         | 17.8%     |
| Maximum Power Voltage (Vmp)        | 38.6V         | 38.86V    |
| Maximum Power Current (Imp)        | 8.81A         | 8.88A     |
| Open Circuit Voltage (Voc)±3%      | 46.51V        | 46.79V    |
| Short Circuit Current (Isc)±3%     | 9.57A         | 9.68A     |
| Power Tolerance                    | 0 to +3%      |           |
| Operating Temperature              | - 40 ~ + 85°C |           |
| Maximum System Voltage             | DC 1000V      |           |
| Nominal Operating Cell Temperature | 43±3°C        |           |
| Fire Safety                        | Class C       |           |
| Maximum Series Fuse Rating         | 15A           |           |

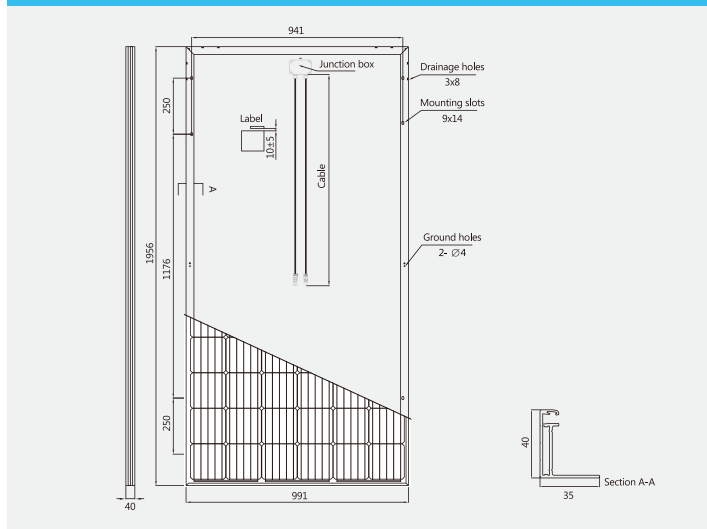
## ELECTRICAL SPECIFICATIONS (NOCT)

| Model Type                  | ETP340-72 | ETP345-72 |
|-----------------------------|-----------|-----------|
| Peak Power (Pmax)           | 252W      | 256W      |
| Maximum Power Voltage (Vmp) | 35.63V    | 35.87V    |
| Maximum Power Current (Imp) | 7.07A     | 7.13A     |
| Open Circuit Voltage (Voc)  | 43.69V    | 44.01V    |
| Short Circuit Current (Isc) | 7.75A     | 7.81A     |

## MECHANICAL SPECIFICATIONS

|                 |                           |
|-----------------|---------------------------|
| Cell Type       | Poly-Crystalline, 6' inch |
| Number of Cells | 72pcs(6×12)               |
| Weight          | 22 kg                     |
| Dimension       | 1956×991×40mm             |
| Front Cover     | 3.2mm Tempered Glass      |
| Frame           | Anodized Aluminium Alloy  |
| Junction Box    | IP67, 3 Bypass Diodes     |
| Cable Type      | 4mm <sup>2</sup>          |
| Length of Cable | 1200mm                    |
| Connector       | Jiaming: PV-JM601         |
| Origin          | China                     |

## PHYSICAL CHARACTERISTICS Unit:mm (inch)



## TEMPERATURE COEFFICIENT

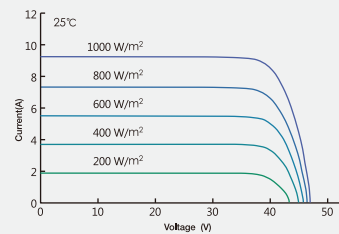
|                                |            |
|--------------------------------|------------|
| Temp. Coeff. of Isc (TK Isc)   | 0.05% /°C  |
| Temp. Coeff. of Voc (TK Voc)   | -0.33% /°C |
| Temp. Coeff. of Pmax (TK Pmax) | -0.41% /°C |

## PACKING MANNER

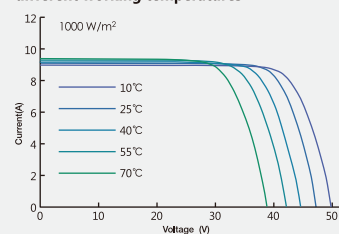
|                  |        |
|------------------|--------|
| Container        | 40' HQ |
| Piece/Pallet     | 30     |
| Pallet/Container | 24     |
| Piece/Container  | 720    |

## ELECTRICAL CHARACTERISTICS

Current-Voltage Curve under different irradiance



Current-Voltage Curve under different working temperatures



**Note:** the specifications are obtained under the Standard Test Conditions (STCs): 1000 W/m<sup>2</sup> solar irradiance, 1.5 Air Mass, and cell temperature of 25°C. The NOCT is obtained under the Test Conditions: 800 W/m<sup>2</sup>, 20°C ambient temperature, 1m/s wind speed, AM 1.5 spectrum.

Please contact [support@etsolar.com](mailto:support@etsolar.com) for technical support. The actual transactions will be subject to the contracts. This parameters is for reference only and it is not a part of the contracts. The specifications are subject to change without prior notice.